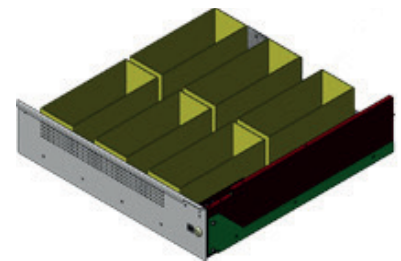


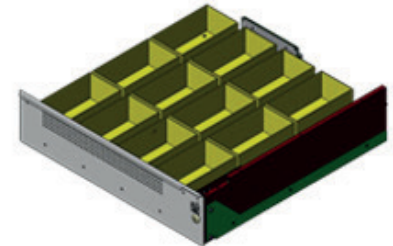
FEATURES

- High quality scale eliminates the need to count small items by hand and reduces restocking time
- Stand alone or add-on a RoboCrib®
- High-resolution 19" (48cm) touch display
- Up to 20 scaled modules per controller
- Small locker footprint
- Large see-through windows provide maximum visibility
- LED lighting clearly illuminates the product inside
- Informative status lights on each locker door or drawer
- Motor driven latches reduce jamming and maintenance issues
- Lockers can be numbered per the customer's requirement
- Can be configured with or without standard lockers
- Support up to 5 lbs., 25 lbs., or 50 lbs. per scale depending on configuration
- Minimum resolution: 1 gram (5 lbs. pad), 5 grams (25 lbs. pad), 10 grams (50 lbs. pad)
- Optional: Caster wheels make it easy to relocate lockers where you want them
- Power: 100-240VAC-50/60HZ, 2A/1.0A MAX

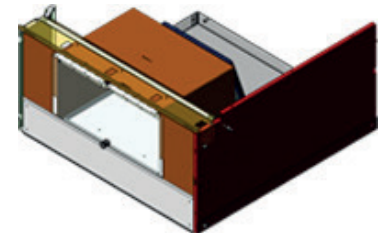
| Part Number | Door Dimensions | Useable Capacity | Required Rack Space |
|-------------|-----------------------------------|---|---------------------|
| 714-111 | 1 drawer 24"W (60cm) x 6"H (15cm) | 6-Bins at 161.2 in ³ per Bin | 2 |
| 714-112 | 1 drawer 24"W (60cm) x 6"H (15cm) | 12-Bins at 80.3 in ³ per Bin | 2 |
| 714-250 | 1 door 24"W (60cm) x 12"H (30cm) | Not Applicable | 4 |
| 714-252 | 1 door 24"W (60cm) x 12"H (30cm) | 2-Bins at 1,549.8 in ³ per Bin | 4 |
| 714-253 | 1 door 24"W (60cm) x 12"H (30cm) | 3-Bins at 861 in ³ per Bin | 4 |
| 714-254 | 1 door 24"W (60cm) x 12"H (30cm) | 4-Bins at 602.7 in ³ per Bin | 4 |
| 714-261 | 1 door 24"W (60cm) x 18"H (30cm) | 1- Disk Stack 18" Dia. | 6 |
| 714-264 | 1 door 24"W (60cm) x 12"H (45cm) | 4- Disk Stacks at 7.8" Dia. | 4 |
| 714-273 | 1 door 24"W (60cm) x 24"H (45cm) | 3-Bins at 2,100 in ³ per Bin | 8 |



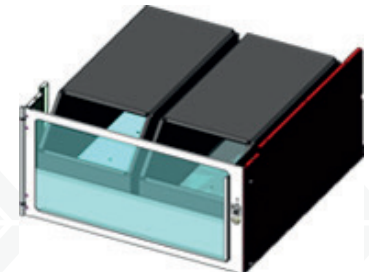
714-111



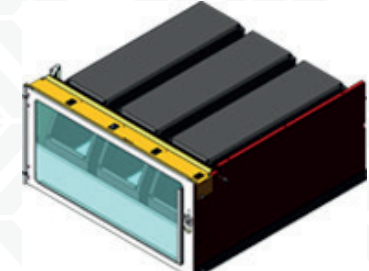
714-112



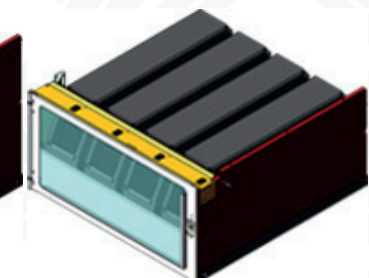
714-250



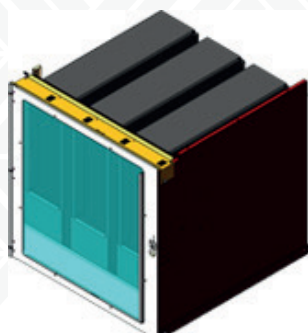
714-252



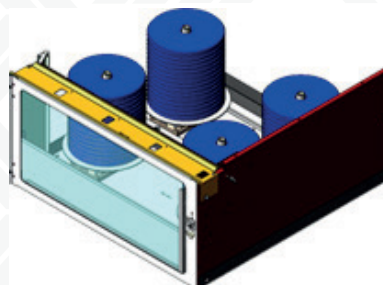
714-253



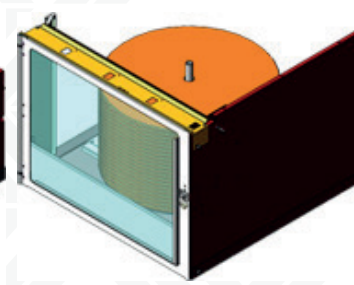
714-254



714-273



714-264



714-261